

Setting Up Intercom Apartment System

Introduction

This tech guide will step you through the steps to set up the HikVision DS-KD8102-V for the first time. It will also include how to setup the room stations.

Before you begin

Ensure you have the iVMS-4200 software installed on your computer. This can be downloaded from the Website below:

http://www.hikvision.com.au/Tools_84.html

▶ iVMS-4200(v2.4) (for intercom)

Before you program your door and room stations ensure you have installed the same firmware version (1.4.0 or later version). You can get the latest version of the firmware from your supplier the distributor of Hikvision.

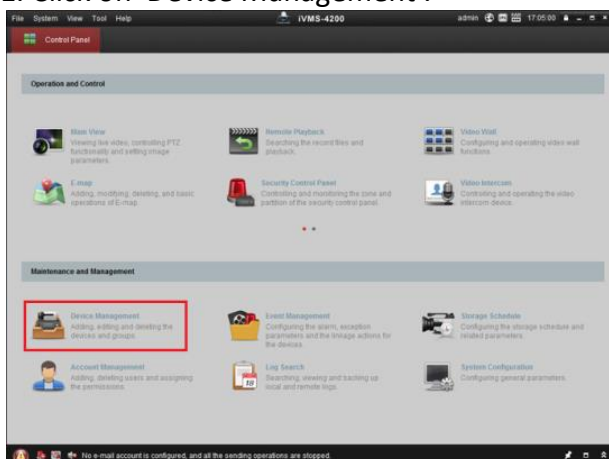
Notes

These steps are based on factory default settings with the devices not yet activated.

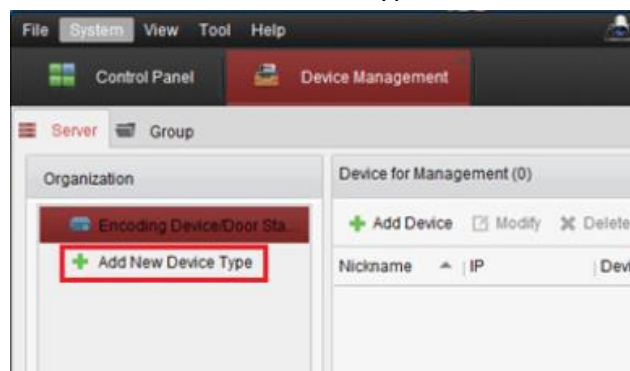
Your computer's IP address needs to have the IP address as 192.0.0.254 otherwise it will have issues communicating to the door station and room stations.

1.1 Setting up the iVMS-4200

1. Click on 'Device Management'.



2. Click on 'Add New Device Type' from left side Menu



3. Ensure that 'Encoding Device / Door Station' and 'Indoor Station / Master Station' is ticked and click on OK.



1.2 Setting up Building Door Station

1. Connect a LAN cable into the Apartment door station (LAN 1 port) and connect it to your network.

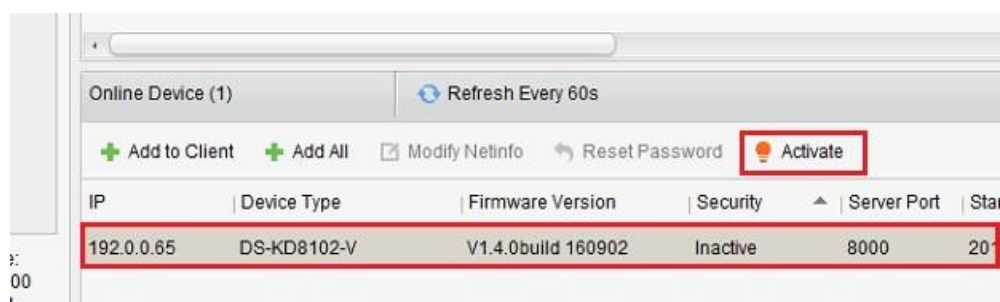
Note, Do not connect the Apartment door station to a PoE port otherwise you will void your warranty.



3. Select 'Encoding / Device / Door Station' from the left menu in iVMS-4200.

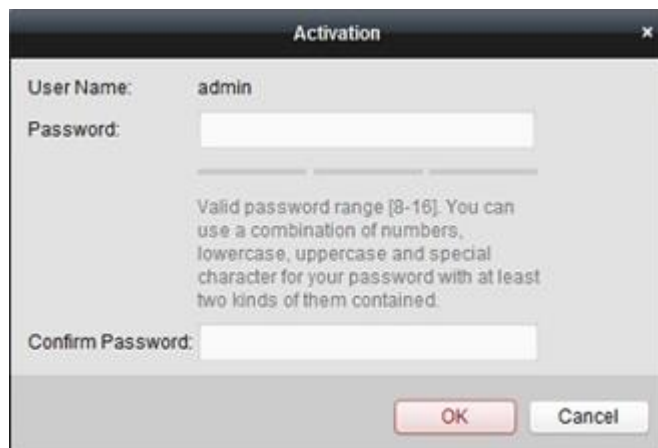


4. Select your Apartment Door station from the bottom section and then click 'Activate'.



5. When prompted, enter in a password for this door station. This can be anything you want. You can use the same password as you use to login to iVMS-4200 which will make it easy to remember.

If you ever want to reconfigure this door station at a later time, you will need to know this password.



Activation

User Name: admin

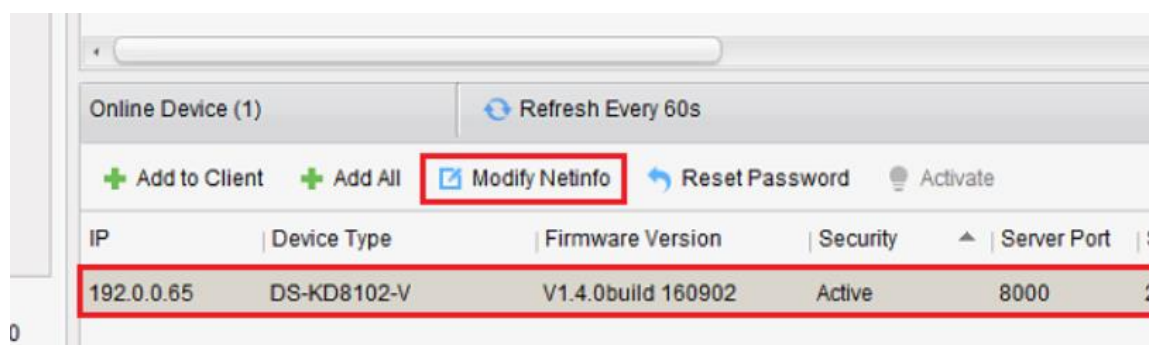
Password:

Valid password range [8-16]. You can use a combination of numbers, lowercase, uppercase and special character for your password with at least two kinds of them contained.

Confirm Password:

OK Cancel

6. Click on the door station from the bottom section and click on 'Modify NetInfo'

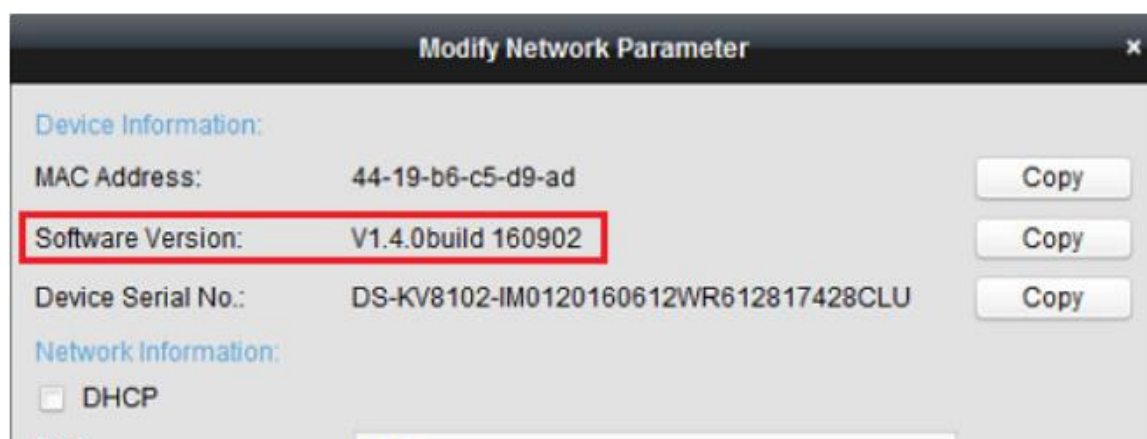


Online Device (1) Refresh Every 60s

+ Add to Client + Add All **Modify NetInfo** Reset Password Activate

IP	Device Type	Firmware Version	Security	Server Port	S
192.0.0.65	DS-KD8102-V	V1.4.0build 160902	Active	8000	2

7. Make sure the software version is v1.4.0 or above before continuing. If it's not then you will need to update the firmware before setting up the system. Refer to the firmware update tech note for steps on how to update the firmware



Modify Network Parameter

Device Information:

MAC Address: 44-19-b6-c5-d9-ad Copy

Software Version: V1.4.0build 160902 Copy

Device Serial No.: DS-KV8102-IM0120160612WR612817428CLU Copy

Network Information:

DHCP

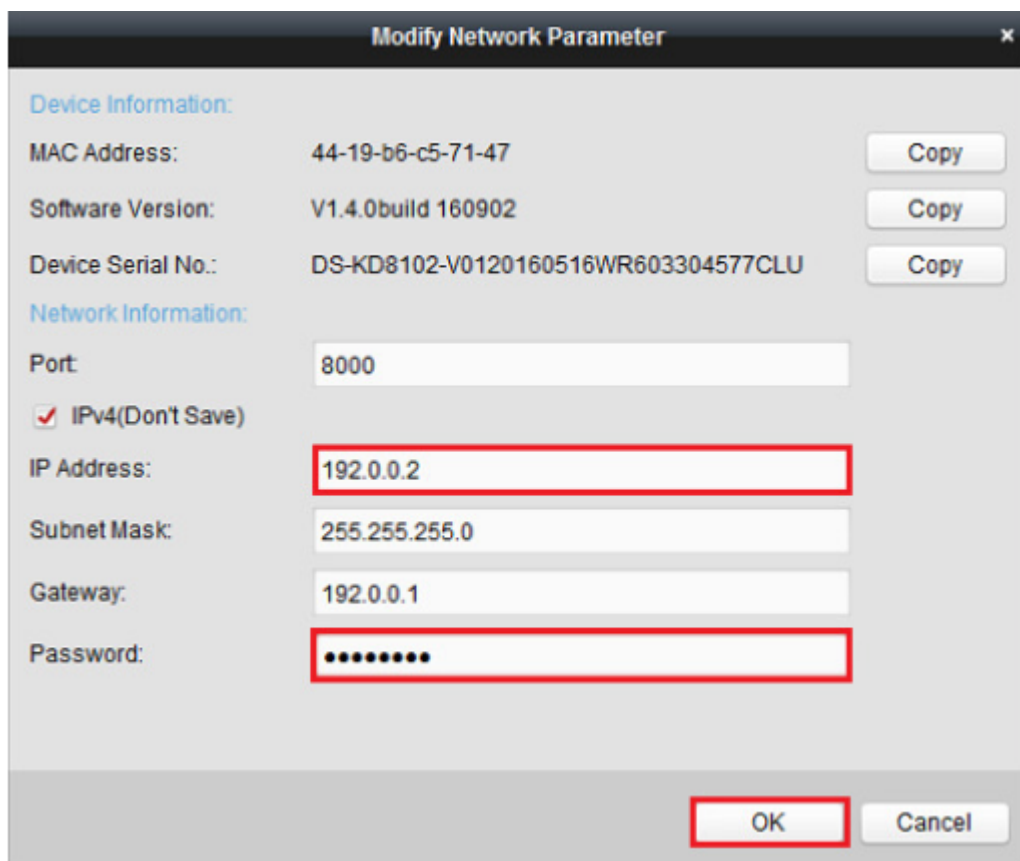
8. Up to 9 Apartment door stations can be added to the system.

Enter in the IP address for the building door stations.

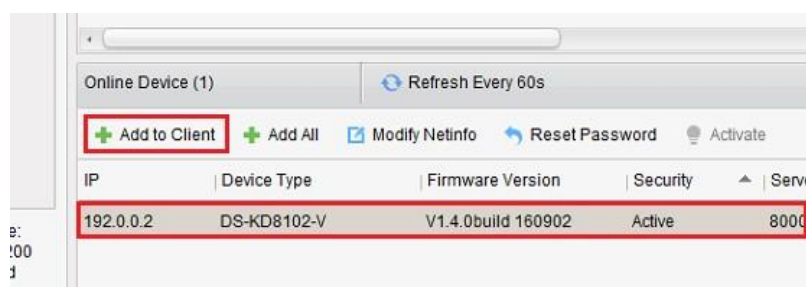
Use the following IP addresses as it will make it easier for later on:

- Apartment Door Station 1 = 192.0.0.2
- Apartment Door Station 2 = 192.0.0.3
- Apartment Door Station 3 = 192.0.0.4
- Apartment Door Station 4 = 192.0.0.5
- Apartment Door Station 5 = 192.0.0.6
- Apartment Door Station 6 = 192.0.0.7
- Apartment Door Station 7 = 192.0.0.8
- Apartment Door Station 8 = 192.0.0.9
- Apartment Door Station 9 = 192.0.0.10

Once the IP address is set, enter in the password at the bottom which you used to activate it. Then click on OK.



9. Select the Door station from the bottom section and then click on 'Add to Client'.



10. Now you need to do some settings for this door station.

Nickname – Give the door station a name. In my example, it's going to be called 'Door 1'.

Address – Leave the IP address as it is

Port – Leave this as port 8000

Username – set this as admin

Password – Enter the password you used to activate the door station

Leave the Export to group ticked, once the above is set click on Add.

Adding Mode:

IP/Domain IP Segment IP Server HiDDNS Batch Import

Add Offline Device

Nickname: Door 1

Address: 192.0.0.2

Port: 8000

User Name: admin

Password: *****

Export to Group

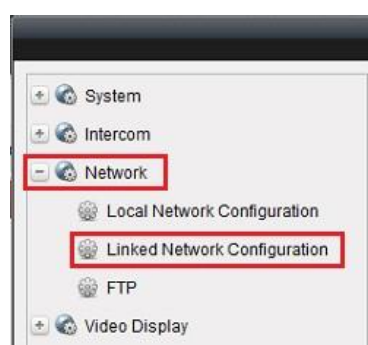
Set the device name as the group name and add all the channels connected to the device to the group.

Add Cancel

11. Select the Door station from the top list, and click on 'Remote Configuration' from along the top.

Nickname	IP	Device Serial No.	Security
Door 1	192.0.0.2	DS-KD8102-V0120160708WR622550068CLU	Weak

12. Click on 'Network' > 'Linked Network Configuration' from the left menu.



13. **Master Station IP Address** – Enter in Master Station IP Address if you got a Master station in the system, otherwise left 0.0.0.0 to this field,
SIP Server IP Address – Enter in Master Station IP Address if you got a Master station in the system, otherwise enter in 0.0.0.0 to this field



14. Close the remote configuration screen.

Room Station Setup

The following needs to be done for each of the room stations you are connecting to the system. It's recommend you only connect one room station in at a time while setting it up. This way it will make it easy to work out which room station you are configuring.

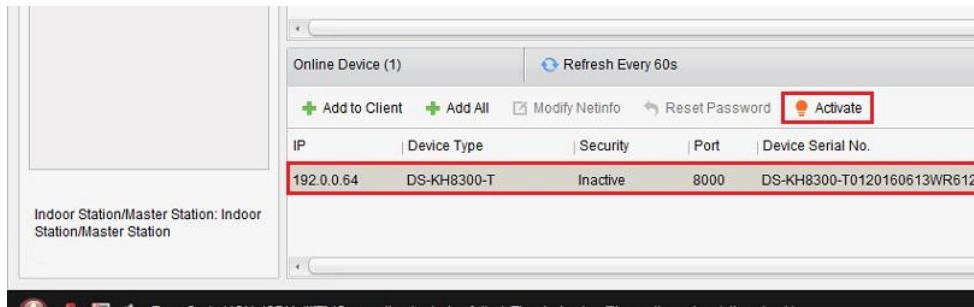
1. Connect a LAN cable into the room station and plug it into a Hikvision Audio/Video Distributor PoE (24v) switch, it should then power up.



2. Wait for the touch screen to fully power up.
3. Select 'Indoor Station / Master Station' from the left menu in iVMS-4200.



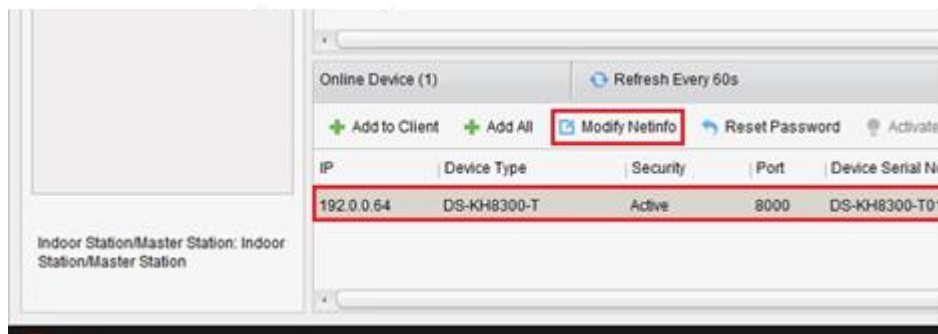
4. Select the room station from the list and click on 'Activate'



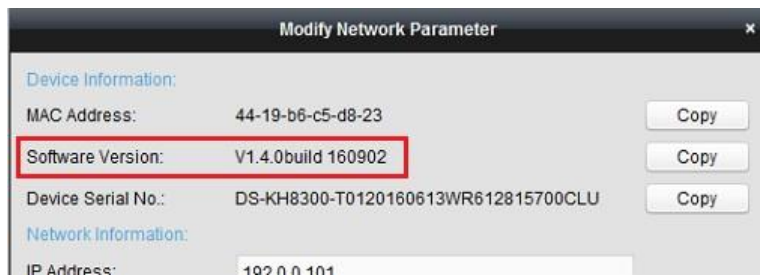
5. When prompted, enter in a password for this door station. This can be anything you want. You can use the same password as you use to login to iVMS-4200 which will make it easy to remember.



6. Select the door station you just activated and click on 'Modify NetInfo'.



7. Make sure the software version is v1.4.0 or above before continuing. If it's not then you will need to update the firmware before setting up the system. Refer to the firmware update tech note for steps on how to update the firmware.

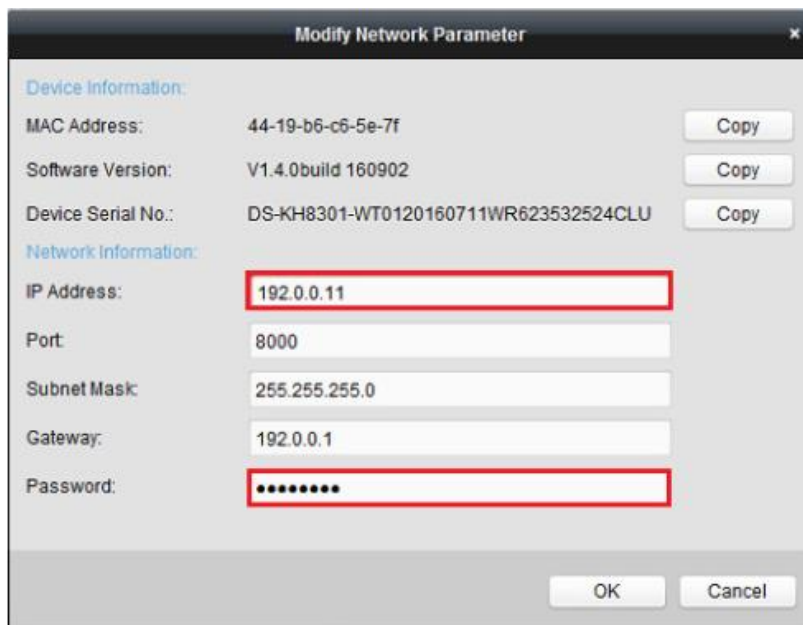


8. Each room station on the system needs to have a unique IP address.

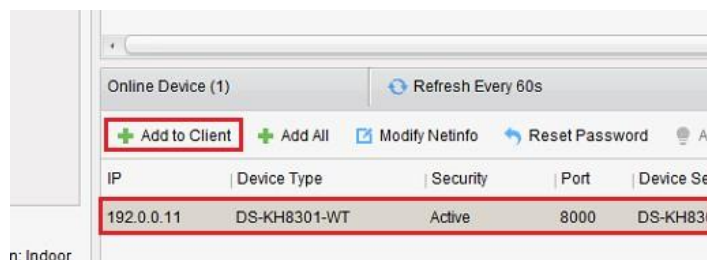
Set the first room station's IP address as 192.0.0.11

Next room station's IP address as 192.0.0.12 and so on..

Then enter in the password you used to activate the room station and then click OK.



9. Select the room station from the list at the bottom and click 'Add to Client'.



10. Now you need to set some settings for this room station.

Leave the adding mode as IP/Domain.

Nickname – Give the room station a name. In my example, it's going to be called 'Room 1'.


Address – Leave the address as it is.

Port – Leave this as port 8000

Username – set this as admin

Password – Use the password you used to activate this room station.

Once the above is set click on Add.



12. Click on 'Intercom' > 'ID Configuration' from the left menu.

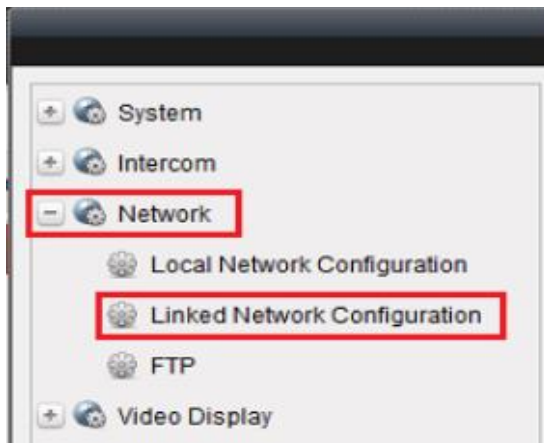


13. Give the room station a room number (eg. 101), then click Save.
Each room needs to have an unique room number.



The screenshot shows a web interface titled "Configuring the Room Numbers". Under the "Device No. Configuration" section, there is a "Device Type" dropdown menu set to "Indoor Station". Below it, the "Room No." text input field contains the number "101" and is highlighted with a red rectangular border. A "Save" button is located at the bottom of the form.

14. Click on 'Network' > 'Linked Network Configuration' from the left menu.



15. You now need to set some IP addresses for the system.

Master Station IP Address – Enter in Master Station IP Address if you got a Master station in the system, otherwise left 0.0.0.0 to this field,

(Main) Door Station IP Address – Enter in 192.0.0.2 to this field

SIP Server IP Address – Enter in Master Station IP Address if you got a Master station in the system, otherwise left in 0.0.0.0 to this field

Main Door Station Type – Change this to Main Door Station (D Series)

Connect Mode – Change this to Same Network

The rest of the settings can remain as default.

Once the above settings have been set, click on Save.



The screenshot shows a web interface titled "Configuring the Network and Sip Parameters". Under the "Linked Network Configuration" section, there are several fields: "Device Type" (Indoor Station), "Master Station IP Address" (0.0.0.0), "(Main) Door Station IP Address" (192.0.0.2), "SIP Server IP Address" (192.0.0.2), "Security Control Panel IP Address" (0.0.0.0), "Security Control Panel Port No." (0), "Main Door Station Type" (Main Door Station (D S...)), and "Connect Mode" (Same Network). A "Save" button is at the bottom.

Now the system has been fully set up and ready to be used.

Repeat this section for each room station you are adding to the system.



Hikvision Oceania

Sydney

Unit 14a, 2 Eden Park Dr, Macquarie Park NSW 2113

Melbourne

Unit 12, 475 Blackburn Rd, Mt Waverley, VIC 3149

Sales Enquiry: salesau@hikvision.com

Technical Enquiry: techsupportau@hikvision.com

Tech Support Line: 1300 976 305 (Post-sales service only for Australian distribution channel and Licensed Security Integrators. Before you call us, please contact our distributors first.)