

# Setting Up IP Intercom For The First Time

## Introduction

This tech guide will step you through the steps to set up the Hikvision IP Intercom for the first time.

This tech guide will show you how to connect just 1 door station and 1 room station to talk to each other.

## Before you begin

Ensure you have the latest iVMS-4200 software for intercom installed on your computer. This can be downloaded from the Website below:

[http://www.hikvision.com.au/Tools\\_84.html](http://www.hikvision.com.au/Tools_84.html)

▶ iVMS-4200(v2.4) (for intercom)

Before you program your door and room stations ensure you have installed the same firmware version (1.4.0 or later version). You can get the latest version of the firmware from your supplier the distributor of Hikvision.

## Notes

These steps are based on factory default settings with the devices not yet activated.

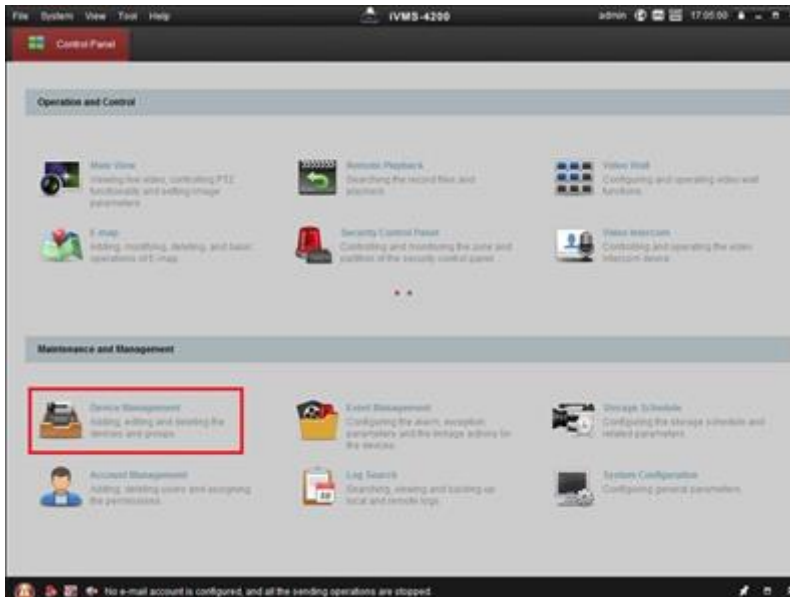
It's recommend you setup the door station before setting up the room stations.

Your computer's IP address needs to have the IP address as 192.0.0.xx (eg. 192.0.0.30)

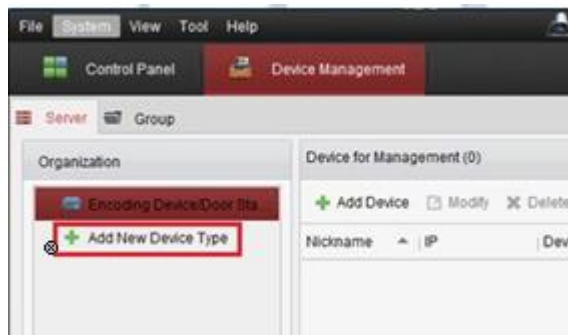
Otherwise it will have issues communicating to the door station and room stations.

# 1.1 Setting up the iVMS-4200

1. Click on 'Device Management'.



2. Click on 'Add New Device Type' from the left side menu.



3. Ensure that 'Encoding Device / Door Station' and 'Indoor Station / Master Station' is ticked and click on OK.



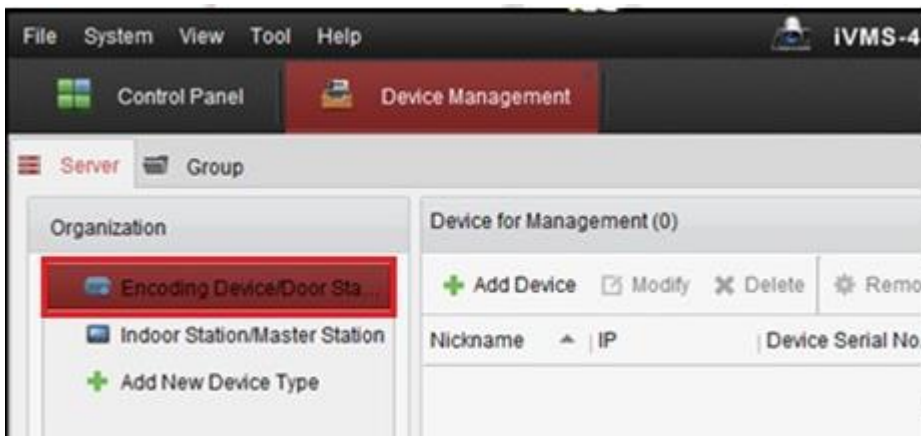
## 1.2 One Door Station to One Room Station Setup

1. Connect a LAN cable into the door station and connect it to your network.

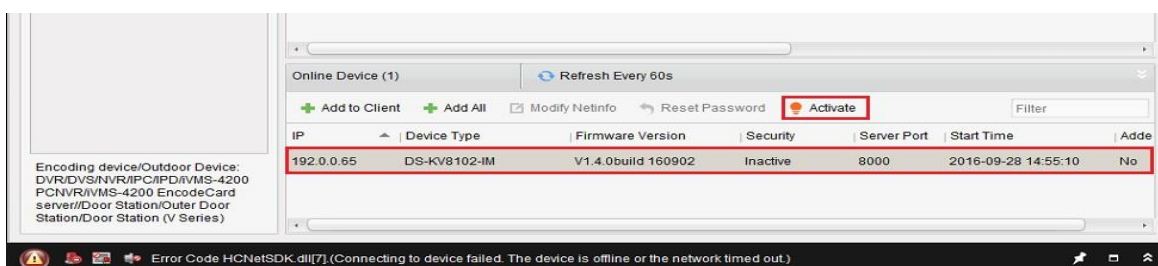


2. Power up the door station.

3. Select 'Encoding / Device / Door Station' from the left menu in iVMS-4200



4. Select your Door station from the bottom section and then click 'Activate'.



5. When prompted, enter in a password for this door station. This can be anything you want. You can use the same password as you use to login to iVMS-4200 which will make it easy to remember.

If you ever want to reconfigure this door station at a later time, you will need to know this password.



Activation

User Name: admin

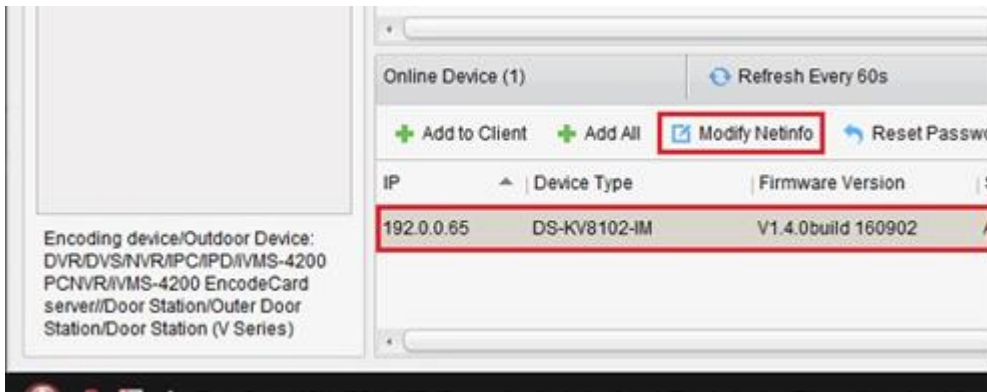
Password:

Valid password range [8-16]. You can use a combination of numbers, lowercase, uppercase and special character for your password with at least two kinds of them contained.

Confirm Password:

OK Cancel

6. Click on the door station from the bottom section and click on 'Netinfo'



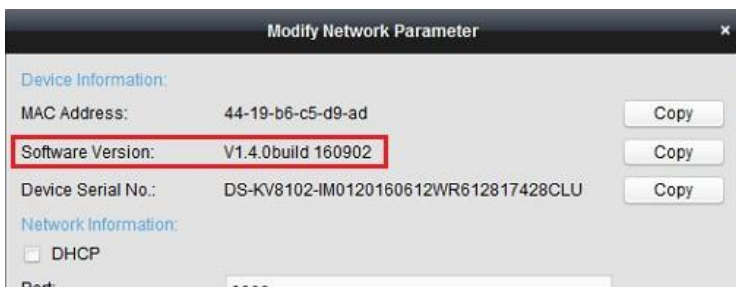
Online Device (1) Refresh Every 60s

+ Add to Client + Add All **Modify Netinfo** Reset Passwo

IP	Device Type	Firmware Version
192.0.0.65	DS-KV8102-IM	V1.4.0build 160902

Encoding device/Outdoor Device:  
DVR/DVS/NVR/IPC/PD/iVMS-4200  
PCNVR/iVMS-4200 EncodeCard  
server//Door Station/Outer Door  
Station/Door Station (V Series)

7. Make sure the software version is v1.4.0 or above before continuing. If it's not then you will need to update the firmware before setting up the system. Refer to the firmware update tech note for steps on how to update the firmware



Modify Network Parameter

Device Information:

MAC Address: 44-19-b6-c5-d9-ad Copy

**Software Version: V1.4.0build 160902** Copy

Device Serial No.: DS-KV8102-IM0120160612WR612817428CLU Copy

Network Information:

DHCP

Port: 8080

8. Make sure the IP says 192.0.0.65 and then enter in the password at the bottom which you used to activate it. Then click on OK.

Modify Network Parameter

Device Information:

MAC Address: 44-19-b6-c5-d9-ad Copy

Software Version: V1.4.0build 160902 Copy

Device Serial No.: DS-KV8102-IM0120160612WR612817428CLU Copy

Network Information:

DHCP

Port: 8000

IPv4(Don't Save)

IP Address: 192.0.0.65

Subnet Mask: 255.255.255.0

Gateway: 192.0.0.1

IPv6(Don't Save)

Password: \*\*\*\*\*

OK Cancel

9. Select the Door station from the bottom section and then click on 'Add to Client'.

Online Device (1) Refresh Every 60s

+ Add to Client + Add All Modify Netinfo Reset Password

IP	Device Type	Firmware Version	Security
192.0.0.65	DS-KV8102-IM	V1.4.0build 160902	Active

10. Now you need to set some settings for this door station.

**Nickname** – Give the door station a name. In my example, it's going to be called 'Door Station'.

**Address** – Leave this as 192.0.0.65

**Port** – Leave this as port 8000

**Username** – set this as admin

**Password** – Enter the password you used to activate the door station Leave

the **Export to Group** ticked, once the above is set click on Add.

Add

Adding Mode:

IP/Domain  IP Segment  IP Server  HiDDNS  Batch Import

Add Offline Device

Nickname: Door Station

Address: 192.0.0.65

Port: 8000

User Name: admin

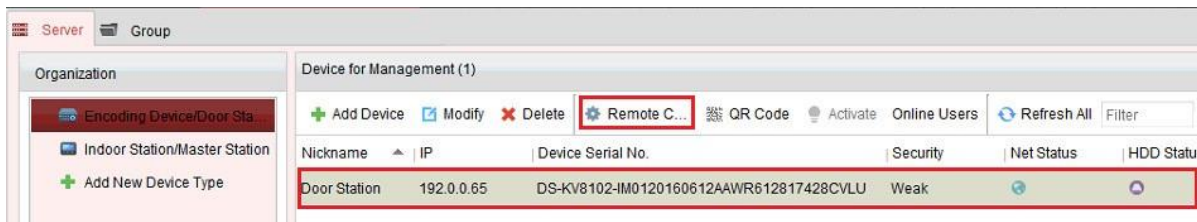
Password: \*\*\*\*\*

Export to Group

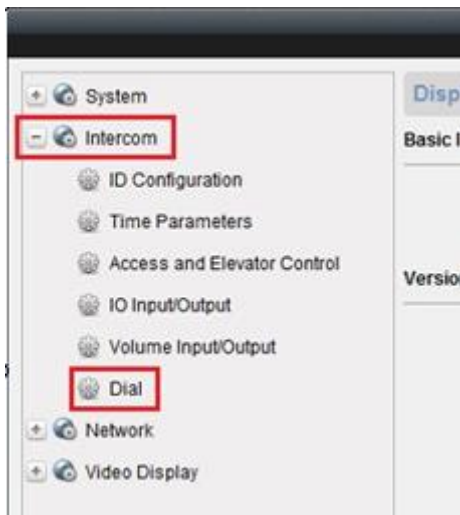
Set the device name as the group name and add all the channels connected to the device to the group.

Add Cancel

11. Select the Door station from the top list, and click on 'Remote Configuration' from along the top.



12. Select 'Intercom' > 'Dial' from the left side menu



13. Enter in a Room number for this door station to call, then click Save. In my example, it's going to call room number 101



14. Click on 'Network' > 'Linked Network Configuration' from the left menu



15. Change the SIP Server IP Address to **192.0.0.65** and leave the rest as default and then click Save.

Configuring the Network and Sip Parameters

Linked Network Configuration

Device Type: Door Station (V Serie)

SIP Server IP Address: 192.0.0.65

Security Control Panel IP Address: 0.0.0.0

Security Control Panel Port No.: 0

Save

16. Close the remote configuration screen.

17. Connect a LAN cable into the room station and connect it to your network.

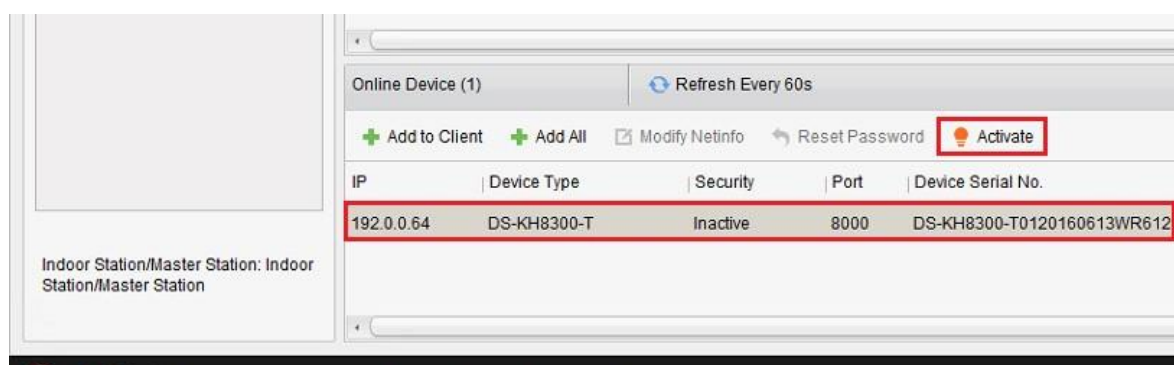
If you plug it into a DS-KAD606 or DS-KAD612 Video/Audio Distributor it should then power up.



18. Wait for the touch screen to fully power up

19. Select 'Indoor Station / Master Station' from the left menu in iVMS-4200

20. Select the room station from the list and click on 'Activate'



21. When prompted, enter in a password for this door station. This can be anything you want. You can use the same password as you use to login to iVMS-4200 which will make it easy to remember.

If you ever want to reconfigure this door station at a later time, you will need to know this password.



Activation

User Name: admin

Password:

Valid password range [8-16]. You can use a combination of numbers, lowercase, uppercase and special character for your password with at least two kinds of them contained.

Confirm Password:

OK Cancel

22. Select the door station you just activated and click on 'Modify NetInfo'.



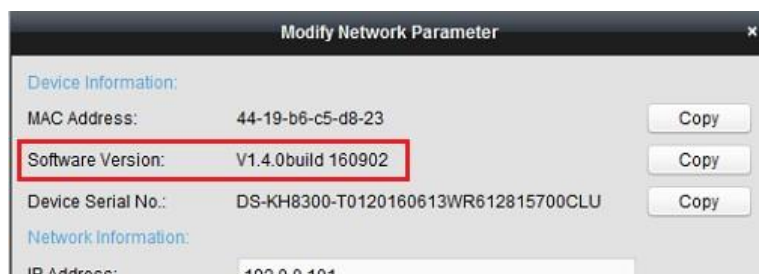
Online Device (1) Refresh Every 60s

+ Add to Client + Add All **Modify NetInfo** Reset Password Activate

IP	Device Type	Security	Port	Device Serial No.
192.0.0.64	DS-KH8300-T	Active	8000	DS-KH8300-T01

Indoor Station/Master Station: Indoor Station/Master Station

23. Make sure the software version is v1.4.0 or above before continuing. If it's not then you will need to update the firmware before setting up the system.



Modify Network Parameter

Device Information:

MAC Address: 44-19-b6-c5-d8-23 Copy

**Software Version: V1.4.0build 160902** Copy

Device Serial No.: DS-KH8300-T0120160613WR612815700CLU Copy

Network Information:

IP Address: 192.0.0.101



24. Change the IP address to 192.0.0.101 and then enter in the password

you used to activate the room station and then click on OK

Modify Network Parameter

Device Information:

MAC Address: 44-19-b6-c5-d8-23 Copy

Software Version: V1.4.0build 160902 Copy

Device Serial No.: DS-KH8300-T0120160613WR612815700CLU Copy

Network Information:

IP Address: 192.0.0.101

Port: 8000

Subnet Mask: 255.255.255.0

Gateway: 192.0.0.1

Password: [redacted]

OK Cancel

25. Select the room station from the list at the bottom and click 'Add to Client'.

Online Device (1) Refresh Every 60s

+ Add to Client + Add All Modify Netinfo Reset Password Activate

IP	Device Type	Security	Port	Device Serial No.
192.0.0.101	DS-KH8300-T	Active	8000	DS-KH8300-T0120160613WR6

26. Now you need to do some setting for this room station.

Leave the adding mode as IP/Doman.

**Nick name** –Give the room station a name, in my example it is called “Room Station”

**IP Address** – Leave the IP address to 192.0.0.101

**Port** – Leave this as port 8000

**Username** – set this as admin

**Password** – Use the password you used to activate this room station.

Once the above is set click on Add.

Add

Adding Mode:

IP/Domain  IP Segment

Nickname: Room Station

Address: 192.0.0.101

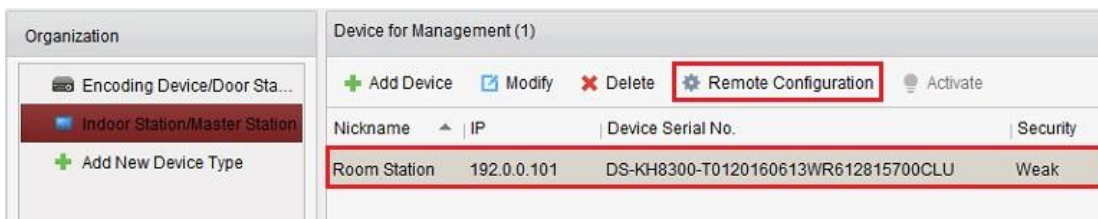
Port: 8000

User Name: admin

Password: [redacted]

Add Cancel

27. Once the device has been added to the top section, click on it from the top section and click on 'Remote Configuration'



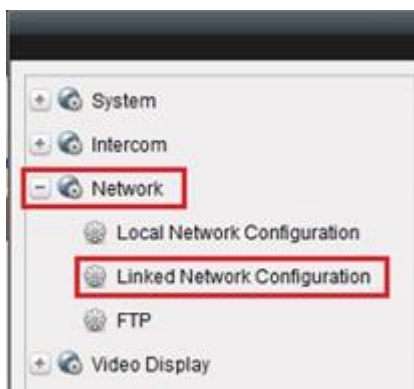
28. Click on 'Intercom' > 'ID Configuration' from the left menu



29. Give the room station a room number (eg. 101), Then Click save.



30. Click on 'Network' > 'Linked Network Configuration' from the left menu



31. You now need to set some IP addresses for the system.

**Master Station IP Address** – Enter in 0.0.0.0 to this field

**(Main) Door Station IP Address** – Enter in 192.0.0.65 to this field

**SIP Server IP Address** – Enter in 192.0.0.65 to this field

**Main Door Station Type** – Change this to Main Door Station (V Series)

**Connect Mode** – Change this to Same Network

The rest of the settings can remain as default.

Once the above settings have been set, click on Save.

The screenshot shows a configuration window titled "Configuring the Network and Sip Parameters". Under the "Linked Network Configuration" section, the following settings are visible:

- Device Type: Indoor Station (dropdown menu)
- Master Station IP Address: 0.0.0.0 (text input)
- (Main) Door Station IP Address: 192.0.0.65 (text input)
- SIP Server IP Address: 192.0.0.65 (text input)
- Security Control Panel IP Address: 0.0.0.0 (text input)
- Security Control Panel Port No.: 0 (text input)
- Main Door Station Type: Main Door Station (D S... (dropdown menu)
- Connect Mode: Same Network (dropdown menu)

A "Save" button is located at the bottom of the configuration area.

Now the system has been fully set up and ready to be used.