



**NEWS RELEASE**  
**Ness releases new 1.0.16 M1 Radio Rx firmware**  
**for the Ness-M1 Cross Platform Control Family**



This release contains several enhancements, new features, plus resolutions for minor issues found in the previous release. EXISTING panels may be updated by first downloading the latest update package from the M1 Dealer website. It is strongly recommended that all control panels be updated to the new version as soon as practical, to reduce potential confusion.

**PLEASE NOTE:**

**This update requires NessRP Version 1.6.18 or later before the update can be done. We strongly suggest you updated to NessRP 1.6.24**

To obtain the latest Updates, go to the Ness M1 Dealer website : <http://www.nessonline.com.au/M1Downloads.asp> (Dealer Login)  
*Note: Ness-M1 Radio Rx firmware 1.0.16 REQUIRES NessRP software 1.6.18. or later. The Firmware update file(s) are separate from the NessRP Software file.*

**NOTE: PLEASE NOTE:**

Prior to performing any update, carefully consider the necessity of doing so. Unless the enhancements are desired, or the resolutions are an issue for you, it may be best to leave a device at its current version. Consider this: .If it isn't broke, don't try to fix it. Prior to updating, we strongly recommend that NessRP be used to RECEIVE ALL and SAVE the customers programming. Following the update you will then be able to select SEND ALL to restore all custom programming. As with any update, there is always a slight possibility that a glitch or failure can occur that renders the control or component unusable. We recommended that you have a spare board on hand in the event a problem is encountered during/after the update. Although such problems are rare, having a spare is a good precaution.

**FLASH MEMORY** - The majority of the components in the M1 product family store their operating firmware in. Flash memory. This state-of-the-art memory allows electronic field updates and eliminates the old fashion method of changing IC chips or shipping boards back to the factory.

**NOTE:** Firmware updating requires a Direct to PC (Serial) Com port connection OR a M1XEP Ethernet connection. Telephone Dial-up connections cannot be used to perform firmware updates.

- Firmware updates are contained in self-extracting (zipped) format for all the controls and for each individual accessory.

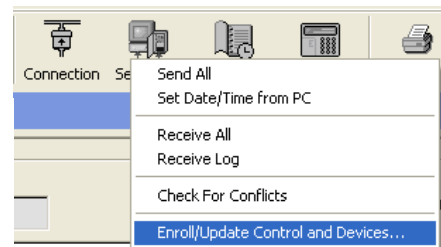
**Steps for Updating**

- 1) Connect a 9 pin serial cable from the Computer's Serial Port to the 9 Pin RS232 Connector on the M1 Control. OR, if you happen to have a M1XEP Ethernet module installed on the control, it may be used to perform the update.
- 2) Using NessRP, open the account belonging to this control and establish a connection from the Connection menu.
- 3) Use the "Receive All" option from the Send/Rcv menu to retrieve the very latest copy of all the data stored in the control.
- 4) Save the account information.

**Updating:**

- 5) Click on the "Send/Rcv" menu/icon along the top of the PC screen.
- 6) Then click either .Update or Verify Firmware. OR "Enroll/Update Control and Devices".

Note: Screen shots shown is from NessRP version 1.6.24 and may vary slightly depending on your version of NessRP.



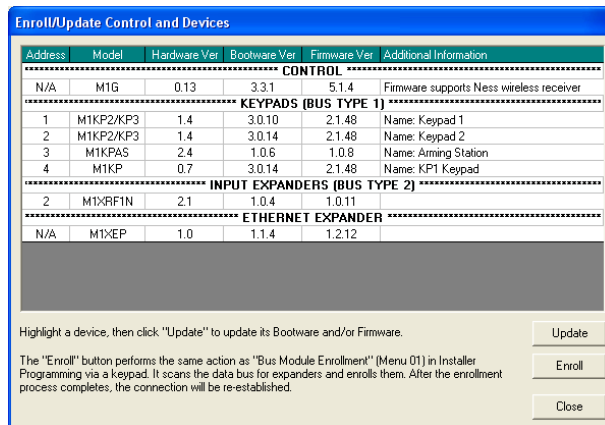
7) On the next screen you must choose the device to be updated.

8) The Update screen will display the current Firmware, Hardware, and Bootware version, along with pull down selection to select the update file(s) that are available.

9) Choosing what to update:

9a) **Bootware Update:** \* This step may be skipped unless specifically required by the firmware update. Please refer to the release notes for the current update.

**This version 1.0.16 requires bootloader 1.0.4**



Use the scroll down arrow to select the Bootware file to use for this update. Based on the hardware revision there may be more than 1 file in the drop down box. Just make sure that the file selected contains the word “BOOT” and the current (latest) version number. Use the scroll down arrow to select: Ver 1.0.4 (Boot\_M1XRF1N\_1.0.4.bin)

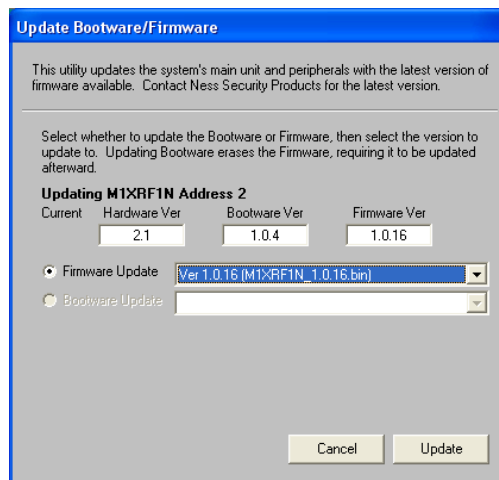
“Check or click the Update”. Once the bootware update is complete you may proceed to the Firmware Update.

IMPORTANT! The control may disconnect after the bootloader is finished. If so, just re-connect and continue on with the Firmware Update.

9b) **Firmware Update:**

Use the scroll down arrow to select the appropriate Firmware file to use for this update. Based on the hardware revision there may be more than 1 file in the drop down box. Just make sure that the file selected contains the current (latest) version number.

**The most current released firmware is:  
Ver 1.0.16 (M1XRF1N\_1.0.15.bin)**



Note: Screen shots shown is from NessRP version 1.6.24 and may vary slightly depending on your version of NessRP

10) Check the “Firmware Update box” then click the Update button. (In some instances the Update button may be labeled “Continue”).